

RTH

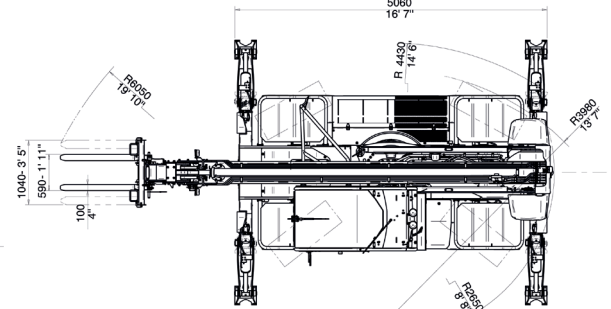
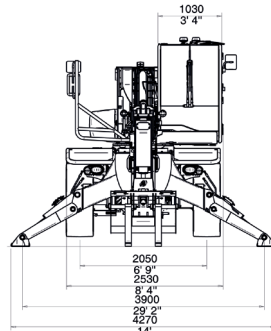
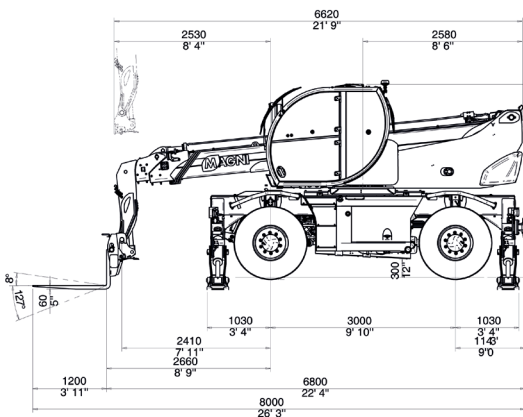
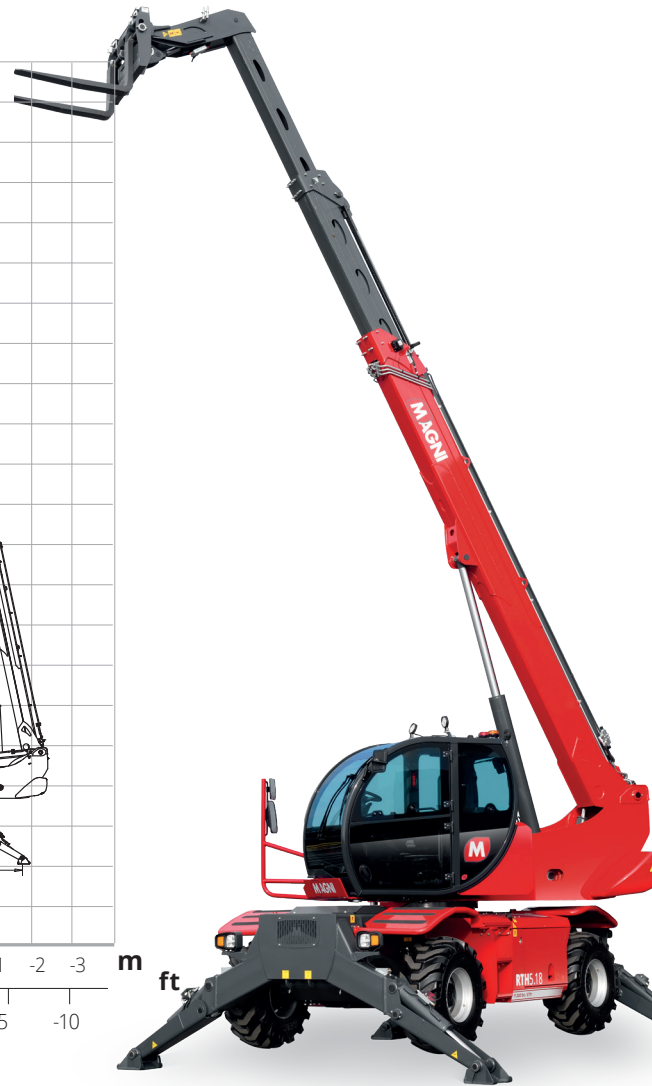
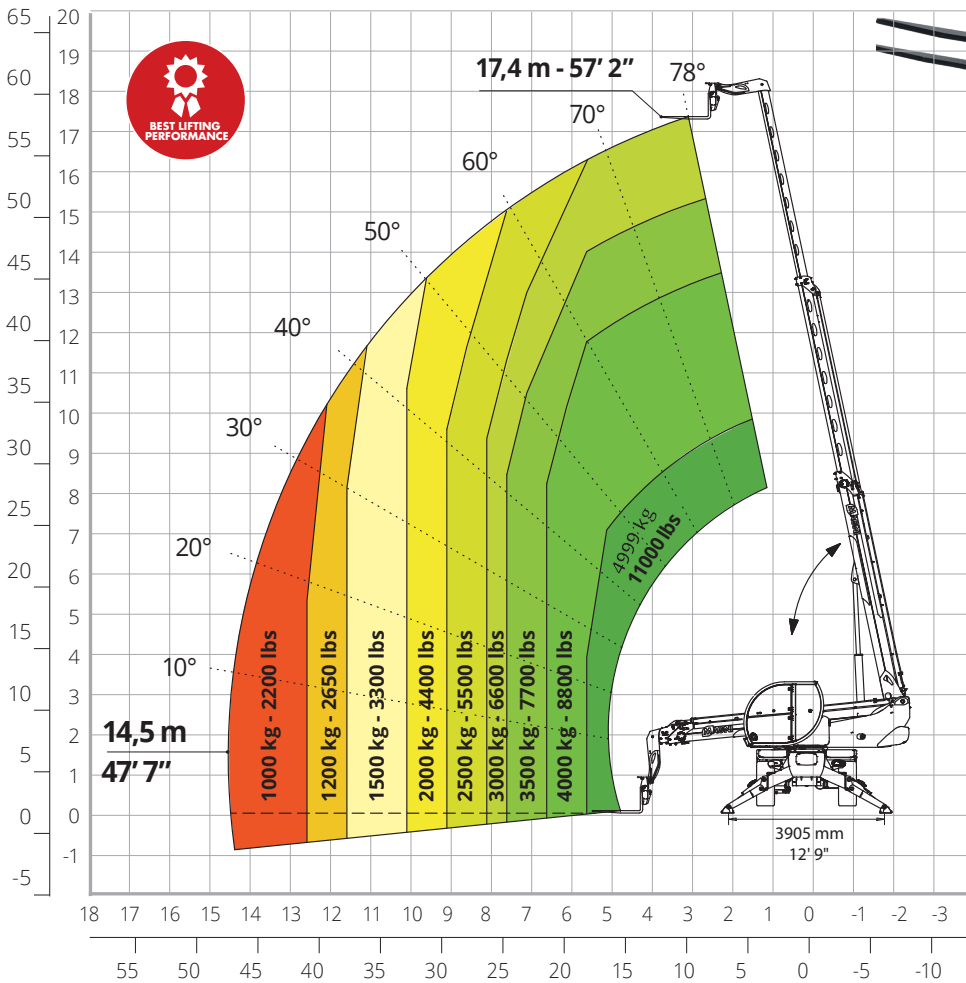


Model available from September 2023
Order intake from February 2023

5.18

PRELIMINARY

Load chart on fully extended stabilizers



RTH 5.18

PRELIMINARY

	Rotating telescopic handler	RTH 5.18	
Machine model	Maximum lifting capacity	4.999 kg / 11,000 lbs	
	Maximum reach	14,5 m / 47' 7"	
	Maximum lifting height	17,4 m / 57' 2"	
	Rotation	400° (limited)	
		Type	Pivoting stabilizers
Stabilizers	Commands	Independent or combined	
	Type	Deutz TCD 3,6 L4 Stage V	Deutz TCD 3,6 L4 EDG Stage IIIA
Engine	Rated Power	55,4 kW (75,3 hp) @ 2,200 rpm	
	Maximum torque	405 Nm a 1,300 rpm	390 Nm a 1,300 rpm
	Displacement	3,620 cm ³	
	Cylinders	4 in line	
	Engine configuration	Turbocharged direct injection diesel	
	Cooling System	Water - Intercooler	
	N. batteries	2 x 12 V	
	Battery type	SHD	
	Batteries capacity	1,200 A-190 Ah	
		Type	Hydrostatic
Transmission	Maximum pressure	480 bar	
	Gearbox	Dropbox, 2 speeds forward-reverse	
	Type	Axles with planetary gearboxes	
Axles and brakes	Front axle	Oscillating, steering with levelling +/-8°	
	Rear axle	Oscillating and steering with hydraulic locking	
	N. steering weels	4WD	
	Steering types	Front/Round/Crab	
	Service brake	Hydraulically operated wet multi-disk brakes on each axle	
	Parking brake	Hydraulic with negative action	
	Tyre sizes	445/65 R19,5	
		Max. travel speed	25 km/h
Performance	Drawbar pull	51 kN	
	Gradeability	51%	
	Turning circle (at forks)	6,060 mm / 19' 10"	
Weights	Total unladen	14,400 kg / 31,745 lbs	
	Front axle unladen (boom retracted and lowered)	6,300 kg / 13,890 lbs	
	Rear axle unladen (boom retracted and lowered)	8,100 kg / 17,855 lbs	
Tank and system capacities	Diesel fuel tank	175 l / 46 US gal	175 l / 46 US gal
	AdBlue	/	/
	Hydraulic fluid	165 l / 43.5 US gal	165 l / 43.5 US gal
	Engine oil	9 l / 2.3 US gal	9 l / 2.3 US gal
	Cooling liquid	20 l / 5.2 US gal	20 l / 5.2 US gal
Hydraulic circuit for movements	Circuit type	Load sensing	
	Service pump	Variable displacement piston pump	
	Max hydraulic capacity	95 l/min	
	Max. working pressure	350 bar	
	Distributor for boom and turret movements	SIL 2 electro-proportional valve	
	Movements control	2 no. two-axis Danfoss joysticks with deadman safety device	
		EN 1459-2: concerning standards for slewing variable-reach trucks	
Standards met	EN 280 / EN 280-1: concerning standards for mobile elevating work platforms		
	FOPS Leve 2 / ROPS		
	EU 2016/1628: concerning engine emissions standards		

The data in this brochure are informative and subject to change without notice. All Pictures shown are for illustration purpose only. Actual product may vary.