

# TH

## 6.20

- Available with 100 kW **Deutz Stage V and IIIA** engines
- Standard pivoting stabilisers for optimised lifting capacities up to 6 tonnes
- **350 bar L/S** hydraulic system
- **4WD**



### MAIN SECTORS

---



INDUSTRY

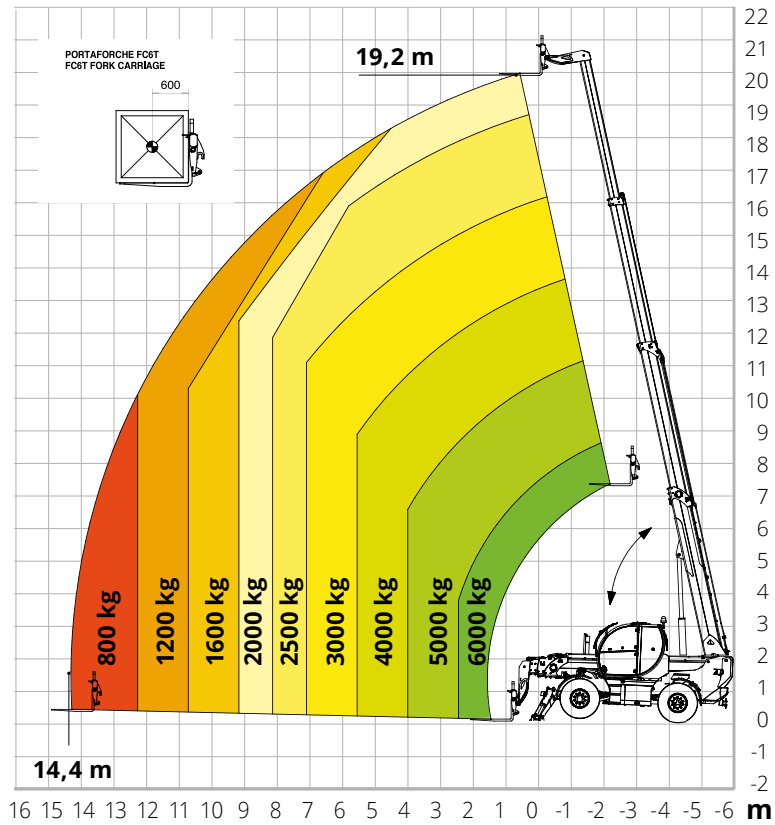


CONSTRUCTION

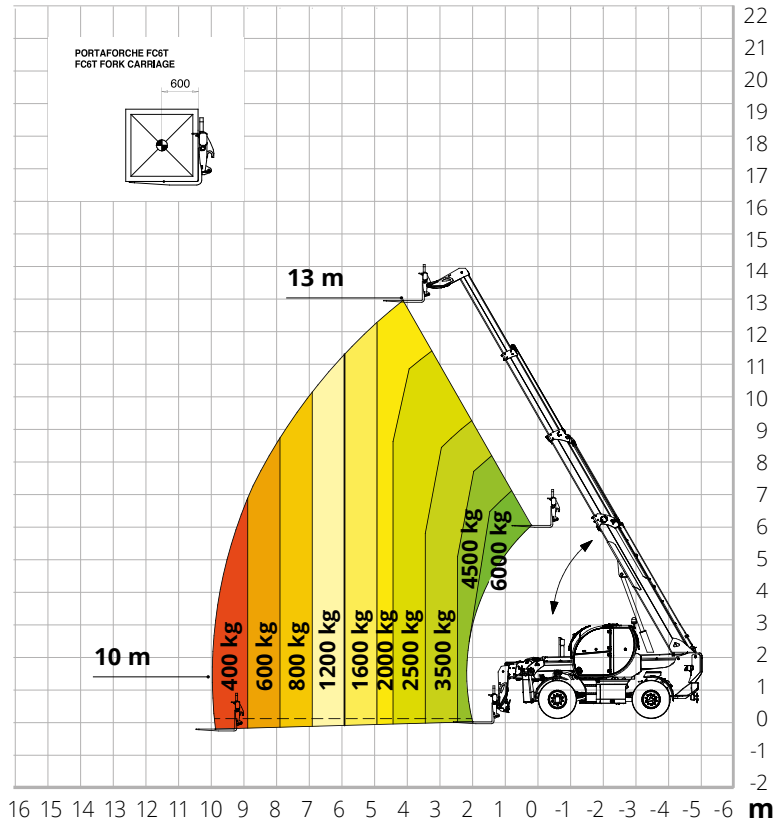


FEATURED  
PROJECTS

Load chart  
**on fully  
 extended  
 stabilizers**



Load chart  
**on tyres**



# TH 6.20

		<b>TH 6.20</b>	
<b>Machine model</b>	Telescopic handler		
	Maximum lifting capacity	6,000 kg (center of gravity 600 mm)	
	Maximum lifting height	19.20 m	
<b>Engine</b>	Type	<b>Deutz TCD 3,6 L4 Stage V</b>	<b>Deutz TCD 3,6 L4 Stage IIIA</b>
	Rated power	100 kW (136 hp) @ 2,200 rpm	
	Maximum torque	500 Nm @ 1,600 rpm	
	Displacement	3,6 l	
	Cylinders	4 in line	
	Engine configuration	Diesel direct injection turbocharged	
	Cooling system	Water – intercooler	
<b>Transmission</b>	Type	Hydrostatic	
	Model	Bosch Rexroth	
	Maximum pressure	500 bar	
	Displacements	Electronically controlled variable displacement pump Variable displacement motor	
	Gear box	Dropbox, 2 speeds forward-reverse	
<b>Axles and brakes</b>	Type	Axles with planetary gearboxes	
	Rear axle	Oscillating and steering with hydraulic locking	
	Front axle	Oscillating and steering with levelling +/- 8°	
	Service brake	Hydraulically operated wet multi-disk brakes on each axle	
	Parking brake	Spring applied hydraulic release Multi-disk brake (S.A.H.R.)	
	Tyres dimensions	445/65 R22,5	
<b>Performance</b>	Max. travel speed	40 km/h	
	Drawbar pull	68 kN	
	Gradeability	47%	
	Turning radius (end of forks)	5,330 mm	
<b>Weights</b>	Total unladen	14,400 kg	
	Front axle unladen (boom retracted and lowered)	5,900 kg	
	Rear axle unladen (boom retracted and lowered)	8,500 kg	
<b>Tank and system capacities</b>	Fuel tank	150 l	
	AdBlue	10 l	
	Hydraulic oil tank	140 l	
	Engine oil tank	9 l	
	Cooling liquid	20 l	
<b>Hydraulic circuit for movements</b>	Max. operating system pressure	350 bar	
	Circuit type	Load sensing	
	Service pump	Danfoss / Rexroth – Variable displacement	
	Controls for boom movements	Danfoss – SIL 2 Electro-proportional valve	
	Controls for stabilizers	Bosch Rexroth – Electro-hydraulic actuators	
	Movements control	1 joystick Danfoss with FNR switch and dead man safety device - Management with CAN bus technology	
<b>Standard met</b>	EN 1459-1: concerning standards for variable-reach trucks EN 13000: concerning standards for mobile cranes EN 280: concerning standards for mobile elevating work platforms FOPS Level 2 / ROPS UE 2016/1628: concerning engine emissions standards		

# TH 6.20

